

This drawing is copyright and MUST NOT be reproduced or used for competitive tendering without written permission from E.ON UK PLC. Contravention may result in legal action being taken.
The contractor is responsible for checking dimensions and any discrepancy to be verified with E.ON UK PLC, before proceeding. Figured dimensions only to be worked to, do not scale. IF IN DOUBT ALWAYS ASK

- NOTES**
- This design has been prepared in accordance with the HEMSA guidance note - CDM2015 Regulations.
 - All works to be completed fully compliant with the following eon standard detail drawings:
 - 13.03 - Installation of street lighting columns.
 - 13.10 - Column door alignment.
 - 14.01 Rev a to 14.06 Rev a - Termination types L1 to L6
 - 14.08 Rev A - Termination Type L8
 - 14.26 - Base compartment general arrangement Rev A
 - 14.27 - Column and sign numbering detail
 - 14.28 - Termination labels in base compartment
 - 14.42 - Feeder pillar type b (up to 6 outgoing circuits)
 - 14.44 - Feeder pillar type d (up to 2 outgoing circuits)
 - 14.50 - Earth pit and electrodes
 - 14.51 - Under ground ducts
 - 14.52 - Cable access chambers
 - 14.53 - Splitter islands (signs plus bollards)
 - 14.54 - Splitter islands (bollards only)

COLUMN LOCATION KEY

- Existing column position to be re-used
- New column position

- Roads included on layout:**
- Abingdon Street
 - Church Street
 - Market Street
 - Queen Street
 - West Street

Revisions			
Rev	Details	By	Date
P1	First issue	MK	21.06.23

DRAWING ISSUED FOR COMMENT

lightingdesign@eon-uk.com

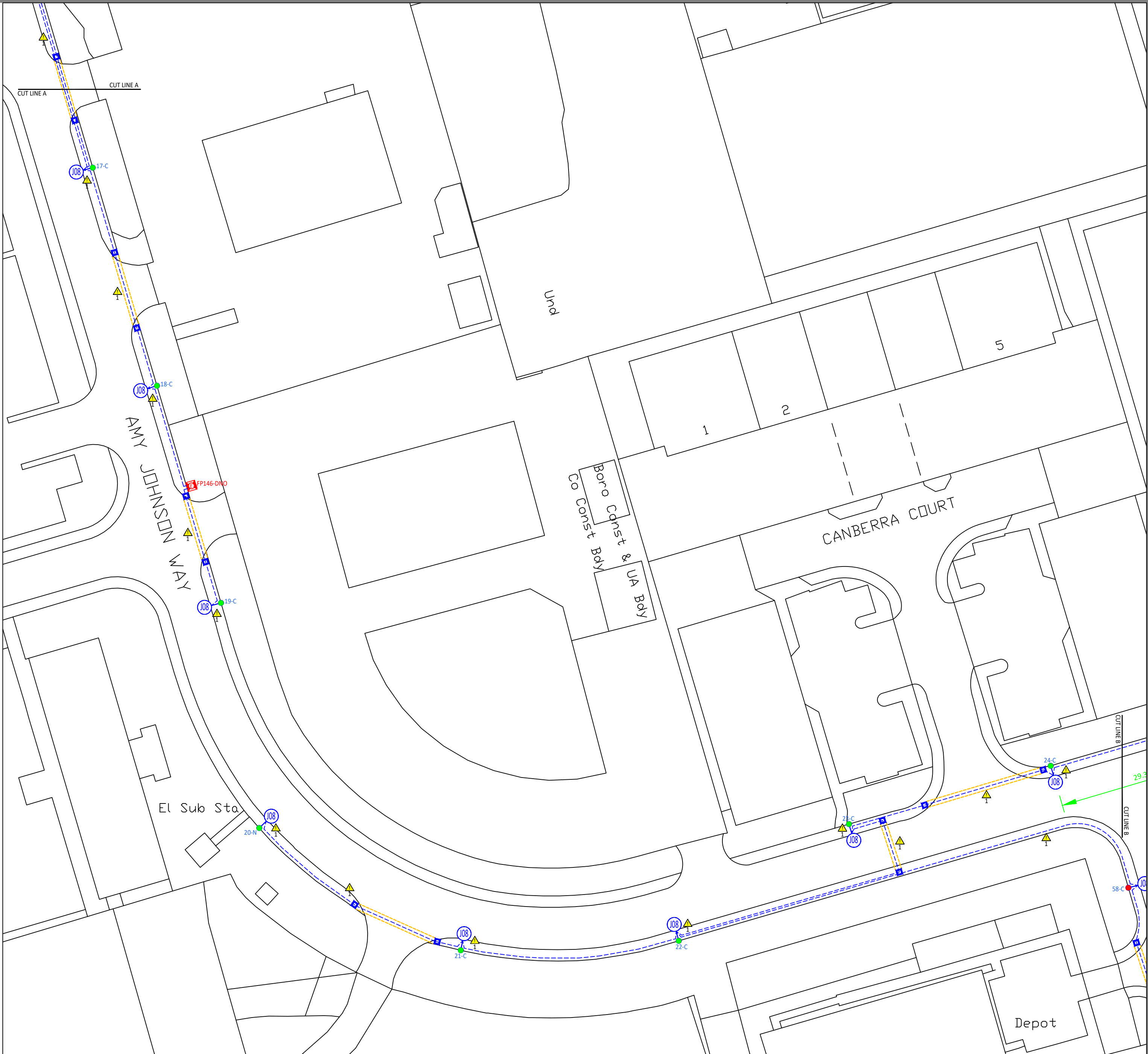
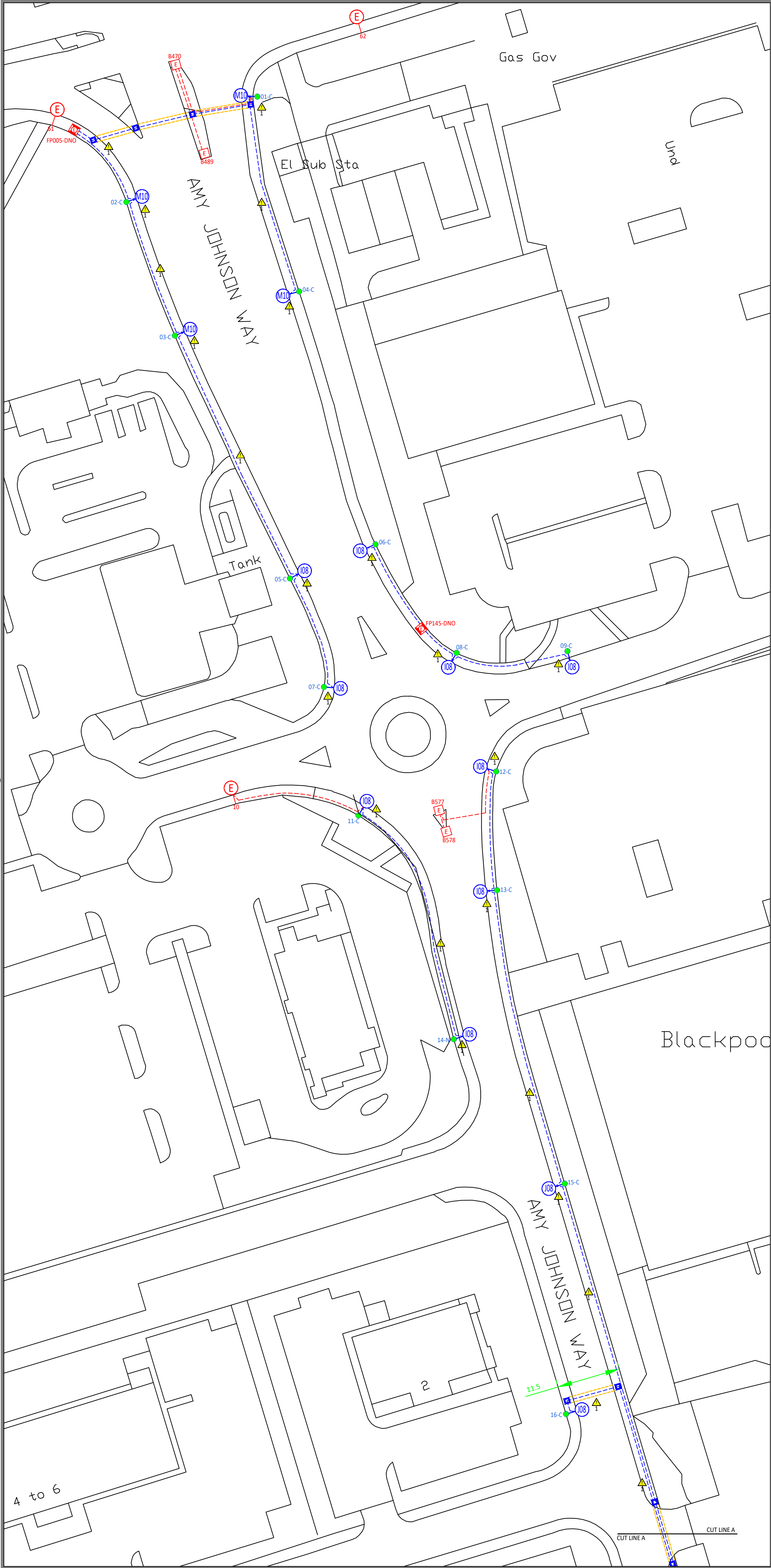
Client **BLACKPOOL BOROUGH COUNCIL**

Project **BLACKPOOL STREET LIGHTING PFI AIP YEAR 6 (PART 2)**

Title **PROPOSED STREET LIGHTING LOCATIONS 1 of 4**

Dwg No. BLK-AIP-YR6-P2-01	Rev P1		
Scales 1:500 @ A1	Date 21.06.23		
Desigr MK	Drawn MK	Checked SJA	Appd SJA

- LIGHTING KEY**
- Proposed ALC conical aluminium road lighting column of 8m nominal height with planted base as per Blackpool PFI output specification. C/W a post top mounted @ 0° tilt DW Windsor Stratum 500 64LED 97W 500mA 4000K 12.99klm flat glass luminaire (Optic setting: C2), finished in grey, incorporating a 7-PIN NEMA socket.
 - Gear Type - Philips Xitanium Dali enabled dimmable led driver, fitted and pre-wired by the manufacturer.
 - Control - Luminaire to be installed with a Lucy Zodion UniNode 3, set to switch on at 55lux (1:0.5).
 - Luminaire ref - ST5.PL64.40.C2.0500.D.FG.21.CMS
 - Proposed ALC conical aluminium road lighting column of 10m nominal height with planted base as per Blackpool PFI output specification. C/W a post top mounted @ 0° tilt DW Windsor Stratum 500 64LED 97W 500mA 4000K 12.99klm flat glass luminaire (Optic setting: C2), finished in grey, incorporating a 7-PIN NEMA socket.
 - Gear Type - Philips Xitanium Dali enabled dimmable led driver, fitted and pre-wired by the manufacturer.
 - Control - Luminaire to be installed with a Lucy Zodion UniNode 3, set to switch on at 55lux (1:0.5).
 - Luminaire ref - ST5.PL64.40.C2.0500.D.FG.21.CMS
 - Proposed black ALC conical aluminium road lighting column of 6m nominal height with planted base as per Blackpool PFI output specification. C/W a post top mounted @ 0° tilt DW Windsor Stratum 450 32LED 51W 500mA 4000K 6.63klm flat glass luminaire (Optic setting: C2), finished in black, incorporating a 7-PIN NEMA socket.
 - Gear Type - Philips Xitanium Dali enabled dimmable led driver, fitted and pre-wired by the manufacturer.
 - Control - Luminaire to be installed with a Lucy Zodion UniNode 3, set to switch on at 55lux (1:0.5).
 - Luminaire ref - ST4.PL32.40.C2.0500.D.FG.10.CMS
 - Proposed ALC conical aluminium road lighting column of 8m nominal height with planted base as per Blackpool PFI output specification. C/W a post top mounted @ 0° tilt DW Windsor Stratum 450 32LED 51W 500mA 4000K 6.63klm flat glass luminaire (Optic setting: C2), finished in grey, incorporating a 7-PIN NEMA socket.
 - Gear Type - Philips Xitanium Dali enabled dimmable led driver, fitted and pre-wired by the manufacturer.
 - Control - Luminaire to be installed with a Lucy Zodion UniNode 3, set to switch on at 55lux (1:0.5).
 - Luminaire ref - ST4.PL32.40.C2.0500.D.FG.21.CMS
 - Proposed ALC conical aluminium road lighting column of 8m nominal height with planted base as per Blackpool PFI output specification. C/W a post top mounted @ 0° tilt DW Windsor Stratum 500 64LED 68W 350mA 4000K 9.45klm flat glass luminaire (Optic setting: C2), finished in grey, incorporating a 7-PIN NEMA socket.
 - Gear Type - Philips Xitanium Dali enabled dimmable led driver, fitted and pre-wired by the manufacturer.
 - Control - Luminaire to be installed with a Lucy Zodion UniNode 3, set to switch on at 55lux (1:0.5).
 - Luminaire ref - ST5.PL64.40.C2.0350.D.FG.21.CMS
 - Proposed ALC conical aluminium road lighting column of 10m nominal height with planted base as per Blackpool PFI output specification. C/W a post top mounted @ 0° tilt DW Windsor Stratum 500 64LED 117W 600mA 4000K 15.18klm flat glass luminaire (Optic setting: C2), finished in grey, incorporating a 7-PIN NEMA socket.
 - Gear Type - Philips Xitanium Dali enabled dimmable led driver, fitted and pre-wired by the manufacturer.
 - Control - Luminaire to be installed with a Lucy Zodion UniNode 3, set to switch on at 55lux (1:0.5).
 - Luminaire ref - ST5.PL64.40.C2.0600.D.FG.21.CMS
 - Proposed black ALC conical aluminium road lighting column of 6m nominal height with planted base as per Blackpool PFI output specification. C/W a twin 0.5m bracket arm and 2 x side entry mounted @ 0° tilt DW Windsor Stratum 450 32LED 36W 350mA 4000K 4.82klm flat glass luminaire (Optic setting: C2), finished in black, incorporating a 7-PIN NEMA socket.
 - Gear Type - Philips Xitanium Dali enabled dimmable led driver, fitted and pre-wired by the manufacturer.
 - Control - Luminaire to be installed with a Lucy Zodion UniNode 3, set to switch on at 55lux (1:0.5).
 - Luminaire ref - ST4.PL32.40.C2.0350.S.FG.10.CMS
 - Lantern replacement only - Replace existing lantern with post top mounted @ 0° tilt DW Windsor Stratum 450 32LED 51W 500mA 4000K 6.63klm flat glass luminaire (Optic setting: C2), finished in grey, incorporating a 7-PIN NEMA socket.
 - Gear Type - Philips Xitanium Dali enabled dimmable led driver, fitted and pre-wired by the manufacturer.
 - Control - Luminaire to be installed with a Lucy Zodion UniNode 3, set to switch on at 55lux (1:0.5).
 - Luminaire ref - ST4.PL32.40.C2.0500.D.FG.21.CMS
 - Lantern replacement only - Replace existing lantern with post top mounted @ 0° tilt DW Windsor Stratum 450 32LED 51W 500mA 4000K 6.63klm flat glass luminaire (Optic setting: C2), finished in black, incorporating a 7-PIN NEMA socket.
 - Gear Type - Philips Xitanium Dali enabled dimmable led driver, fitted and pre-wired by the manufacturer.
 - Control - Luminaire to be installed with a Lucy Zodion UniNode 3, set to switch on at 55lux (1:0.5).
 - Luminaire ref - ST4.PL32.40.C2.0500.D.FG.10.CMS
 - Existing street lighting column to remain
 - Existing street lighting column and lantern to be taken down and removed off site
 - Proposed column number & connection type
 - Transfer of existing service to new column via RED ducting to ENW specification, including Tofco double pole cut out positioned to the bottom of the door aperture as per Eon standard detail dwg no. 14.26
 - Significant Residual Risks
 - 1.Underground high voltage (HV) cables are present in vicinity



This drawing is copyright and MUST NOT be reproduced or used for competitive tendering without written permission from E.ON UK PLC. Contravention may result in legal action being taken.
The contractor is responsible for checking dimensions and any discrepancy to be verified with E.ON UK PLC, before proceeding. Figured dimensions only to be worked to, do not scale. IF IN DOUBT ALWAYS ASK

NOTES

- This design has been prepared in accordance with the HEMSA guidance note - CDM2015 Regulations.
- All works to be completed fully compliant with the following eon standard detail drawings:
 - 13.03 - Installation of street lighting columns.
 - 13.10 - Column door alignment.
 - 14.01 Rev a to 14.06 Rev a - Termination types L1 to L6
 - 14.08 Rev A - Termination Type L8
 - 14.26 - Base compartment general arrangement Rev A
 - 14.27 - Column and sign numbering detail
 - 14.28 - Termination labels in base compartment
 - 14.42 - Feeder pillar type b (up to 6 outgoing circuits)
 - 14.44 - Feeder pillar type d (up to 2 outgoing circuits)
 - 14.50 - Earth pit and electrodes
 - 14.51 - Under ground ducts
 - 14.52 - Cable access chambers
 - 14.53 - Splitter islands (signs plus bollards)
 - 14.54 - Splitter islands (bollards only)

COLUMN LOCATION KEY

- Existing column position to be re-used
- New column position

Roads included on layout:

- Amy Johnson Way

Revisions

Rev	Details	By	Date
P1	First issue	MK	21.06.23

DRAWING ISSUED FOR COMMENT

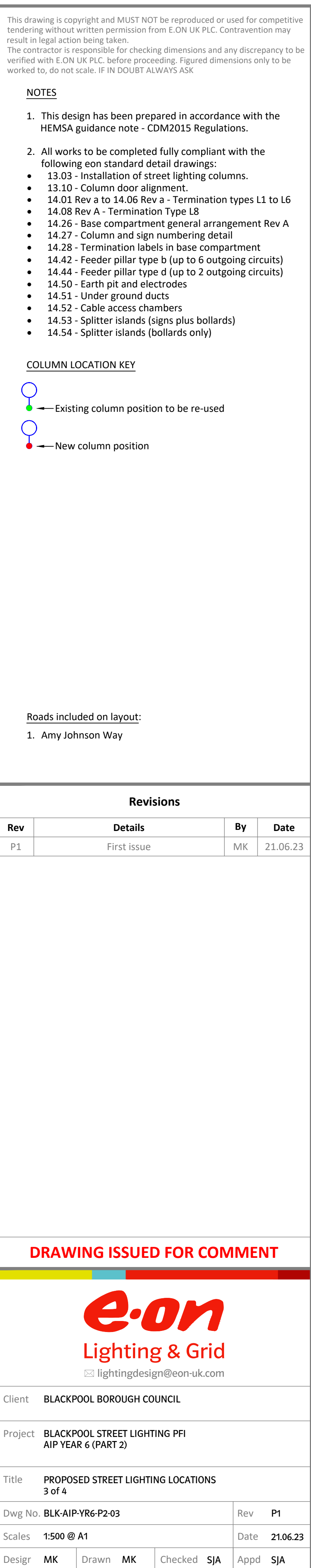


Client	BLACKPOOL BOROUGH COUNCIL		
Project	BLACKPOOL STREET LIGHTING PFI AIP YEAR 6 (PART 2)		
Title	PROPOSED STREET LIGHTING LOCATIONS 2 of 4		
Dwg No.	BLK-AIP-YR6-P2-02	Rev	P1
Scales	1:500 @ A1	Date	21.06.23
Desigr	MK	Drawn	MK
		Checked	SJA
		Appd	SJA

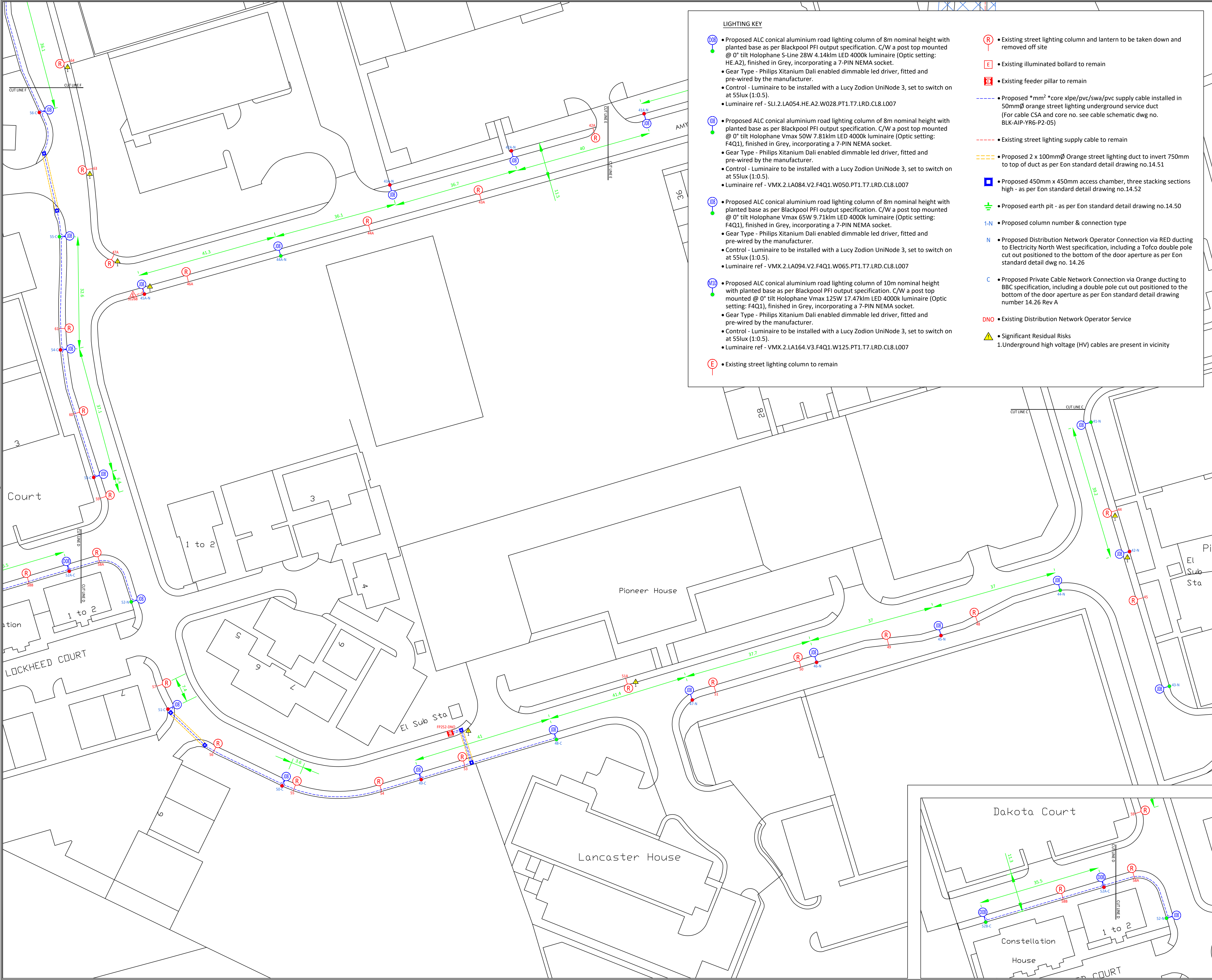
LIGHTING KEY

- Proposed ALC conical aluminium road lighting column of 8m nominal height with planted base as per Blackpool PFI output specification. C/W a post top mounted @ 0° tilt Holophane Vmax 50W 7.81klm LED 4000k luminaire (Optic setting: F4Q1), finished in Grey, incorporating a 7-PIN NEMA socket.
 - Gear Type - Philips Xitanium Dali enabled dimmable led driver, fitted and pre-wired by the manufacturer.
 - Control - Luminaire to be installed with a Lucy Zodion UniNode 3, set to switch on at 55lux (1:0.5).
 - Luminaire ref - VMX.2.LA084.V2.F4Q1.W050.PT1.T7.LRD.CL8.L007
- Proposed ALC conical aluminium road lighting column of 8m nominal height with planted base as per Blackpool PFI output specification. C/W a post top mounted @ 0° tilt Holophane Vmax 65W 9.71klm LED 4000k luminaire (Optic setting: F4Q1), finished in Grey, incorporating a 7-PIN NEMA socket.
 - Gear Type - Philips Xitanium Dali enabled dimmable led driver, fitted and pre-wired by the manufacturer.
 - Control - Luminaire to be installed with a Lucy Zodion UniNode 3, set to switch on at 55lux (1:0.5).
 - Luminaire ref - VMX.2.LA094.V2.F4Q1.W065.PT1.T7.LRD.CL8.L007
- Proposed ALC conical aluminium road lighting column of 10m nominal height with planted base as per Blackpool PFI output specification. C/W a post top mounted @ 0° tilt Holophane Vmax 125W 17.47klm LED 4000k luminaire (Optic setting: F4Q1), finished in Grey, incorporating a 7-PIN NEMA socket.
 - Gear Type - Philips Xitanium Dali enabled dimmable led driver, fitted and pre-wired by the manufacturer.
 - Control - Luminaire to be installed with a Lucy Zodion UniNode 3, set to switch on at 55lux (1:0.5).
 - Luminaire ref - VMX.2.LA164.V3.F4Q1.W125.PT1.T7.LRD.CL8.L007
- Existing street lighting column to remain
- Existing street lighting column and lantern to be taken down and removed off site
- Existing illuminated bollard to remain
- Existing feeder pillar to remain

- Proposed *mm² *core xlpe/pvc/swa/pvc supply cable installed in 50mmØ orange street lighting underground service duct (For cable CSA and core no. see cable schematic dwg no. BLK-AIP-YR6-P2-05)
- Existing street lighting supply cable to remain
- Proposed 2 x 100mmØ Orange street lighting duct to invert 750mm to top of duct as per Eon standard detail drawing no.14.51
- Proposed 450mm x 450mm access chamber, three stacking sections high - as per Eon standard detail drawing no.14.52
- Proposed earth pit - as per Eon standard detail drawing no.14.50
- Proposed column number & connection type
- Proposed Distribution Network Operator Connection via RED ducting to Electricity North West specification, including a Tofo double pole cut out positioned to the bottom of the door aperture as per Eon standard detail dwg no. 14.26
- Proposed Private Cable Network Connection via Orange ducting to BBC specification, including a double pole cut out positioned to the bottom of the door aperture as per Eon standard detail drawing number 14.26 Rev A
- Existing Distribution Network Operator Service
- Significant Residual Risks
 - 1.Underground high voltage (HV) cables are present in vicinity



- - Proposed ALC conical aluminium road lighting column of 8m nominal height with planted base as per Blackpool PFI output specification. C/W a post top mounted @ 0° tilt Holophone 5-Line 28W 4.14km LED 4000K luminaire (Optic setting: HE.A2), finished in Grey, incorporating a 7-PIN NEMA socket.
 - Gear Type - Philips Xitanium Dali enabled dimmable led driver, fitted and pre-wired by the manufacturer.
 - Control - Luminaire to be installed with a Lucy Zodion UniNode 3, set to switch on at 55lux (1:0.5).
 - Luminaire ref - SLI.2.LA054.HE.A2.W028.PT1.77.LRD.CL8.L007
- - Proposed ALC conical aluminium road lighting column of 8m nominal height with planted base as per Blackpool PFI output specification. C/W a post top mounted @ 0° tilt Holophone Vmax 50W 7.81km LED 4000K luminaire (Optic setting: F4Q1), finished in Grey, incorporating a 7-PIN NEMA socket.
 - Gear Type - Philips Xitanium Dali enabled dimmable led driver, fitted and pre-wired by the manufacturer.
 - Control - Luminaire to be installed with a Lucy Zodion UniNode 3, set to switch on at 55lux (1:0.5).
 - Luminaire ref - VMX.2.LA084.V2.F4Q1.W050.PT1.77.LRD.CL8.L007
- - Proposed ALC conical aluminium road lighting column of 8m nominal height with planted base as per Blackpool PFI output specification. C/W a post top mounted @ 0° tilt Holophone Vmax 65W 9.71km LED 4000K luminaire (Optic setting: F4Q1), finished in Grey, incorporating a 7-PIN NEMA socket.
 - Gear Type - Philips Xitanium Dali enabled dimmable led driver, fitted and pre-wired by the manufacturer.
 - Control - Luminaire to be installed with a Lucy Zodion UniNode 3, set to switch on at 55lux (1:0.5).
 - Luminaire ref - VMX.2.LA094.V2.F4Q1.W065.PT1.77.LRD.CL8.L007
- - Proposed ALC conical aluminium road lighting column of 10m nominal height with planted base as per Blackpool PFI output specification. C/W a post top mounted @ 0° tilt Holophone Vmax 125W 17.47km LED 4000K luminaire (Optic setting: F4Q1), finished in Grey, incorporating a 7-PIN NEMA socket.
 - Gear Type - Philips Xitanium Dali enabled dimmable led driver, fitted and pre-wired by the manufacturer.
 - Control - Luminaire to be installed with a Lucy Zodion UniNode 3, set to switch on at 55lux (1:0.5).
 - Luminaire ref - VMX.2.LA164.V3.F4Q1.W125.PT1.77.LRD.CL8.L007
- E
 - Existing street lighting column to remain
- R
 - Existing street lighting column and lantern to be taken down and removed off site
- E
 - Existing illuminated bollard to remain
- E
 - Existing feeder pillar to remain
- - Proposed *mm² *core xlpe/pvc/swa/pvc supply cable installed in 50mmØ orange street lighting underground service duct (For cable CSA and core no. see cable schematic dwg no. BLK-AIP-YR6-P2-05)
- - Existing street lighting supply cable to remain
- - Proposed 2 x 100mmØ Orange street lighting duct to invert 750mm to top of duct as per Eon standard detail drawing no.14.51
- - Proposed 450mm x 450mm access chamber, three stacking sections high - as per Eon standard detail drawing no.14.52
- +
 - Proposed earth pit - as per Eon standard detail drawing no.14.50
- 1-N
 - Proposed column number & connection type
- N
 - Proposed Distribution Network Operator Connection via RED ducting to Electricity North West specification, including a Tofco double pole cut out positioned to the bottom of the door aperture as per Eon standard detail dwg no. 14.26
- C
 - Proposed Private Cable Network Connection via Orange ducting to BBC specification, including a double pole cut out positioned to the bottom of the door aperture as per Eon standard detail drawing number 14.26 Rev A
- DNO
 - Existing Distribution Network Operator Service
- ⚠
 - Significant Residual Risks
 - 1.Underground high voltage (HV) cables are present in vicinity



LIGHTING KEY

- Proposed ALC conical aluminium road lighting column of 8m nominal height with planted base as per Blackpool PFI output specification. C/W a post top mounted @ 0° tilt Holophane S-Line 28W 4.14klm LED 4000k luminaire (Optic setting: HE.A2), finished in Grey, incorporating a 7-PIN NEMA socket.
 - Gear Type - Philips Xitanium Dali enabled dimmable led driver, fitted and pre-wired by the manufacturer.
 - Control - Luminaire to be installed with a Lucy Zodion UniNode 3, set to switch on at 55lux (1:0.5).
 - Luminaire ref - SLI.2.LA054.HE.A2.W028.PT1.T7.LRD.CL8.L007
- Proposed ALC conical aluminium road lighting column of 8m nominal height with planted base as per Blackpool PFI output specification. C/W a post top mounted @ 0° tilt Holophane Vmax 50W 7.81klm LED 4000k luminaire (Optic setting: F4Q1), finished in Grey, incorporating a 7-PIN NEMA socket.
 - Gear Type - Philips Xitanium Dali enabled dimmable led driver, fitted and pre-wired by the manufacturer.
 - Control - Luminaire to be installed with a Lucy Zodion UniNode 3, set to switch on at 55lux (1:0.5).
 - Luminaire ref - VMX.2.LA084.V2.F4Q1.W050.PT1.T7.LRD.CL8.L007
- Proposed ALC conical aluminium road lighting column of 8m nominal height with planted base as per Blackpool PFI output specification. C/W a post top mounted @ 0° tilt Holophane Vmax 65W 9.71klm LED 4000k luminaire (Optic setting: F4Q1), finished in Grey, incorporating a 7-PIN NEMA socket.
 - Gear Type - Philips Xitanium Dali enabled dimmable led driver, fitted and pre-wired by the manufacturer.
 - Control - Luminaire to be installed with a Lucy Zodion UniNode 3, set to switch on at 55lux (1:0.5).
 - Luminaire ref - VMX.2.LA094.V2.F4Q1.W065.PT1.T7.LRD.CL8.L007
- Proposed ALC conical aluminium road lighting column of 10m nominal height with planted base as per Blackpool PFI output specification. C/W a post top mounted @ 0° tilt Holophane Vmax 125W 17.47klm LED 4000k luminaire (Optic setting: F4Q1), finished in Grey, incorporating a 7-PIN NEMA socket.
 - Gear Type - Philips Xitanium Dali enabled dimmable led driver, fitted and pre-wired by the manufacturer.
 - Control - Luminaire to be installed with a Lucy Zodion UniNode 3, set to switch on at 55lux (1:0.5).
 - Luminaire ref - VMX.2.LA164.V3.F4Q1.W125.PT1.T7.LRD.CL8.L007
- Existing street lighting column to remain
- Existing street lighting column and lantern to be taken down and removed off site
- Existing illuminated bollard to remain
- Existing feeder pillar to remain
- Proposed *mm² *core xlpe/pvc/swa/pvc supply cable installed in 50mmØ orange street lighting underground service duct (For cable CSA and core no. see cable schematic dwg no. BLK-AIP-YR6-P2-05)
- Existing street lighting supply cable to remain
- Proposed 2 x 100mmØ Orange street lighting duct to invert 750mm to top of duct as per Eon standard detail drawing no.14.51
- Proposed 450mm x 450mm access chamber, three stacking sections high - as per Eon standard detail drawing no.14.52
- Proposed earth pit - as per Eon standard detail drawing no.14.50
- 1-N • Proposed column number & connection type
- N • Proposed Distribution Network Operator Connection via RED ducting to Electricity North West specification, including a Tofco double pole cut out positioned to the bottom of the door aperture as per Eon standard detail dwg no. 14.26
- C • Proposed Private Cable Network Connection via Orange ducting to BBC specification, including a double pole cut out positioned to the bottom of the door aperture as per Eon standard detail drawing number 14.26 Rev A
- DNO • Existing Distribution Network Operator Service
- Significant Residual Risks
1.Underground high voltage (HV) cables are present in vicinity

This drawing is copyright and MUST NOT be reproduced or used for competitive tendering without written permission from E.ON UK PLC. Contravention may result in legal action being taken.
The contractor is responsible for checking dimensions and any discrepancy to be verified with E.ON UK PLC. before proceeding. Figured dimensions only to be worked to, do not scale. IF IN DOUBT ALWAYS ASK

NOTES

- This design has been prepared in accordance with the HEMSA guidance note - CDM2015 Regulations.
- All works to be completed fully compliant with the following eon standard detail drawings:
 - 13.03 - Installation of street lighting columns.
 - 13.10 - Column door alignment.
 - 14.01 Rev a to 14.06 Rev a - Termination types L1 to L6
 - 14.08 Rev A - Termination Type L8
 - 14.26 - Base compartment general arrangement Rev A
 - 14.27 - Column and sign numbering detail
 - 14.28 - Termination labels in base compartment
 - 14.42 - Feeder pillar type b (up to 6 outgoing circuits)
 - 14.44 - Feeder pillar type d (up to 2 outgoing circuits)
 - 14.50 - Earth pit and electrodes
 - 14.51 - Under ground ducts
 - 14.52 - Cable access chambers
 - 14.53 - Splitter islands (signs plus bollards)
 - 14.54 - Splitter islands (bollards only)

COLUMN LOCATION KEY

- Existing column position to be re-used
- New column position

Roads included on layout:

- Amy Johnson Way

Revisions

Rev	Details	By	Date
P1	First issue	MK	21.06.23

DRAWING ISSUED FOR COMMENT

e-on
Lighting & Grid
lightingdesign@eon-uk.com

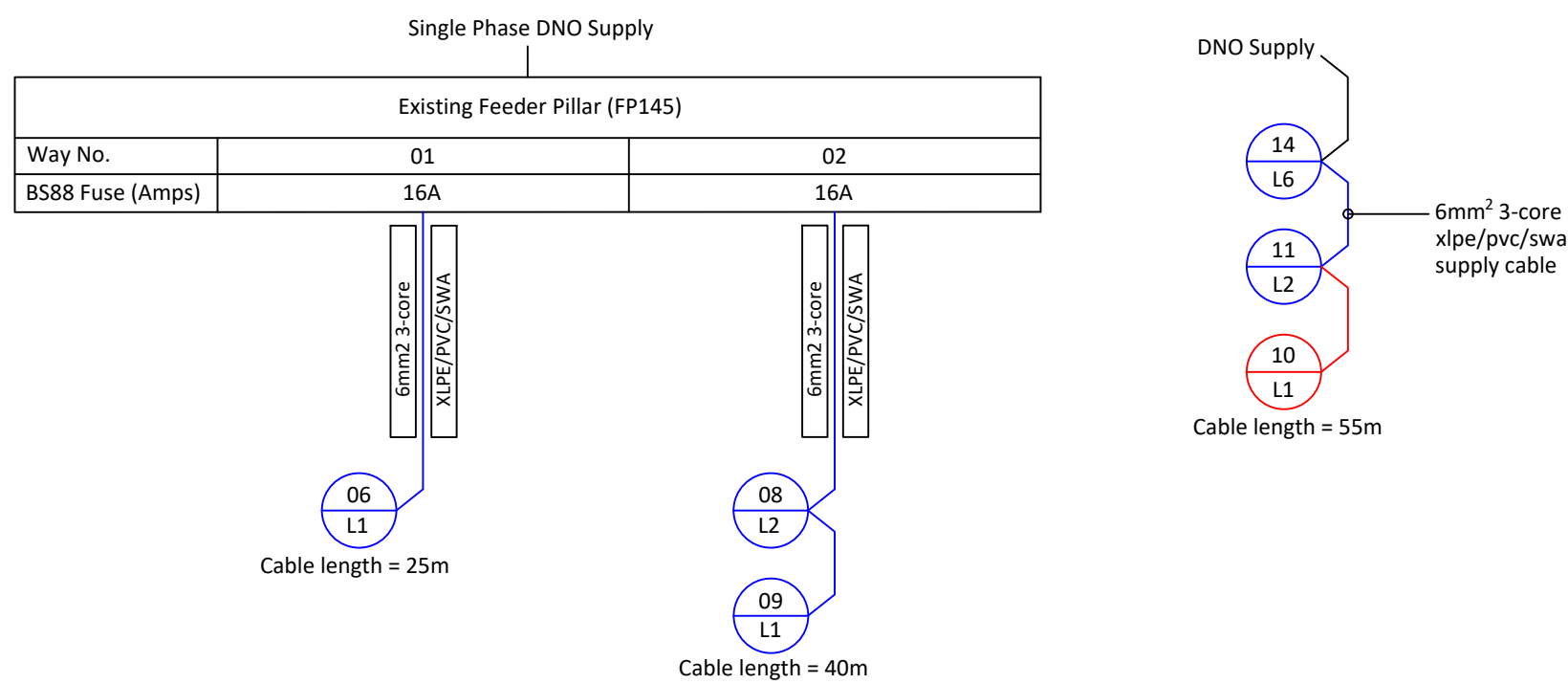
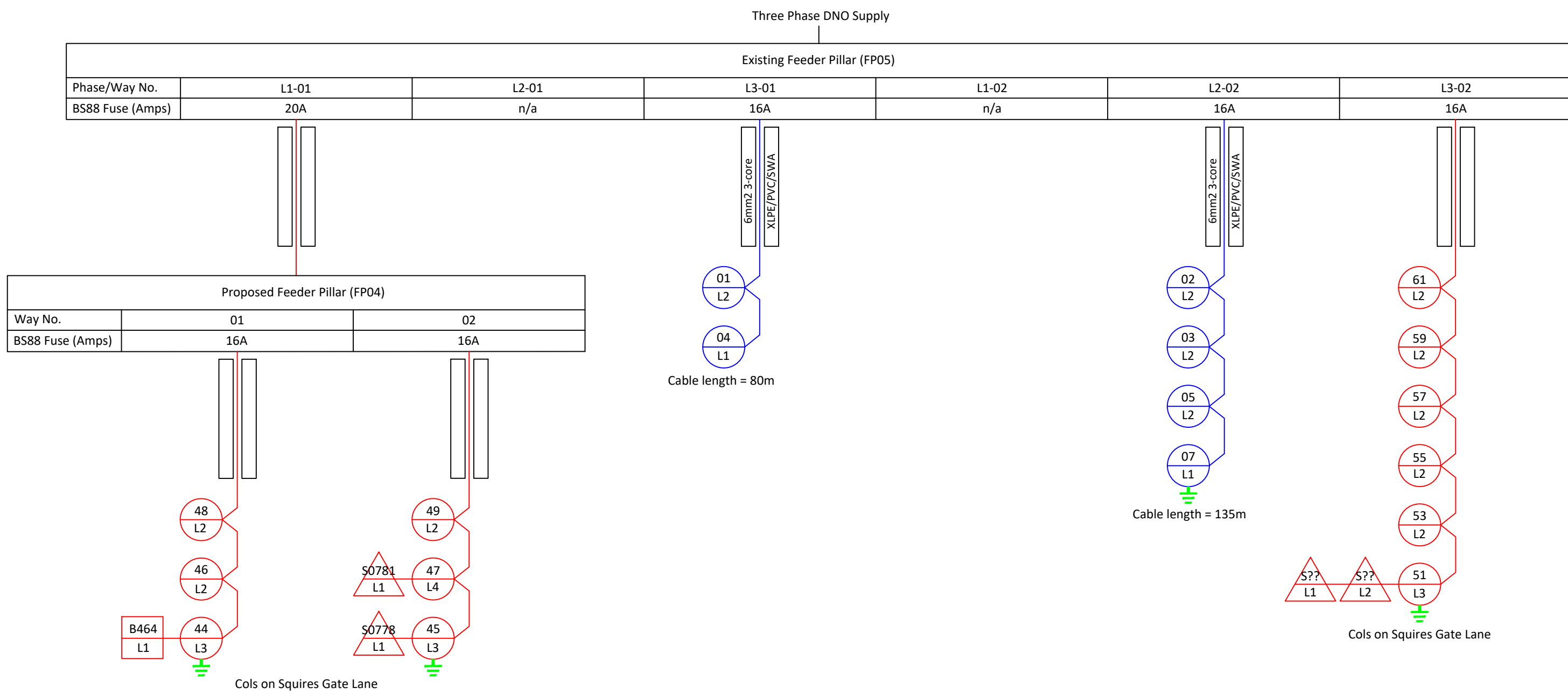
Client BLACKPOOL BOROUGH COUNCIL

Project BLACKPOOL STREET LIGHTING PFI AIP YEAR 6 (PART 2)

Title PROPOSED STREET LIGHTING LOCATIONS 4 of 4

Dwg No. BLK-AIP-YR6-P2-04				Rev	P1
Scales 1:500 @ A1				Date	21.06.23
Desigr	MK	Drawn	MK	Checked	SJA
			Appd	SJA	

Squires Gate Lane



KEY

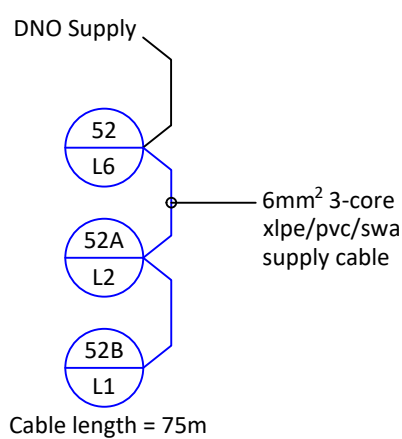
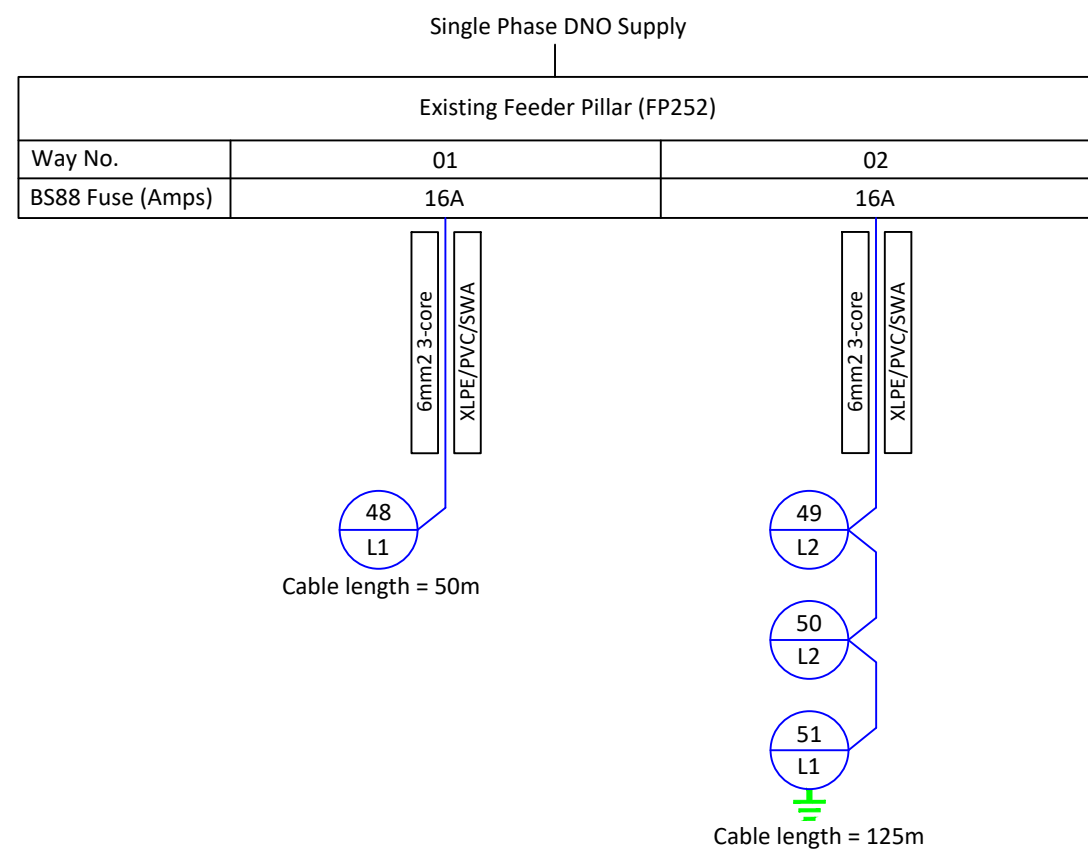
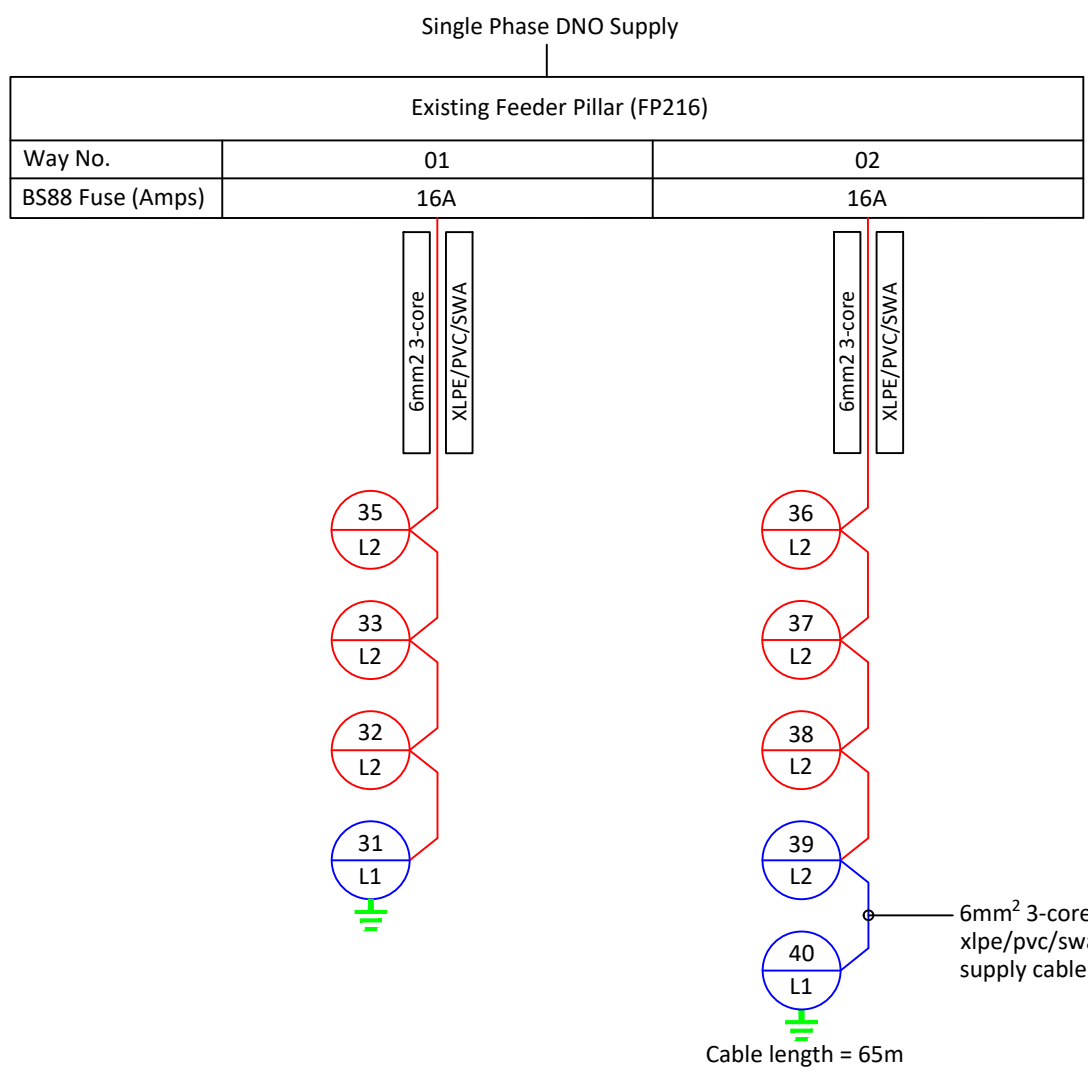
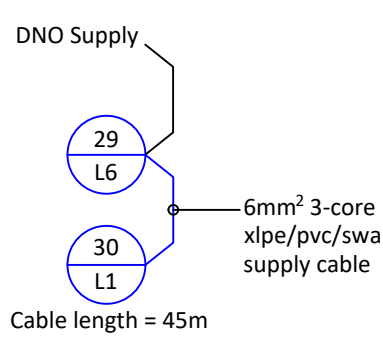
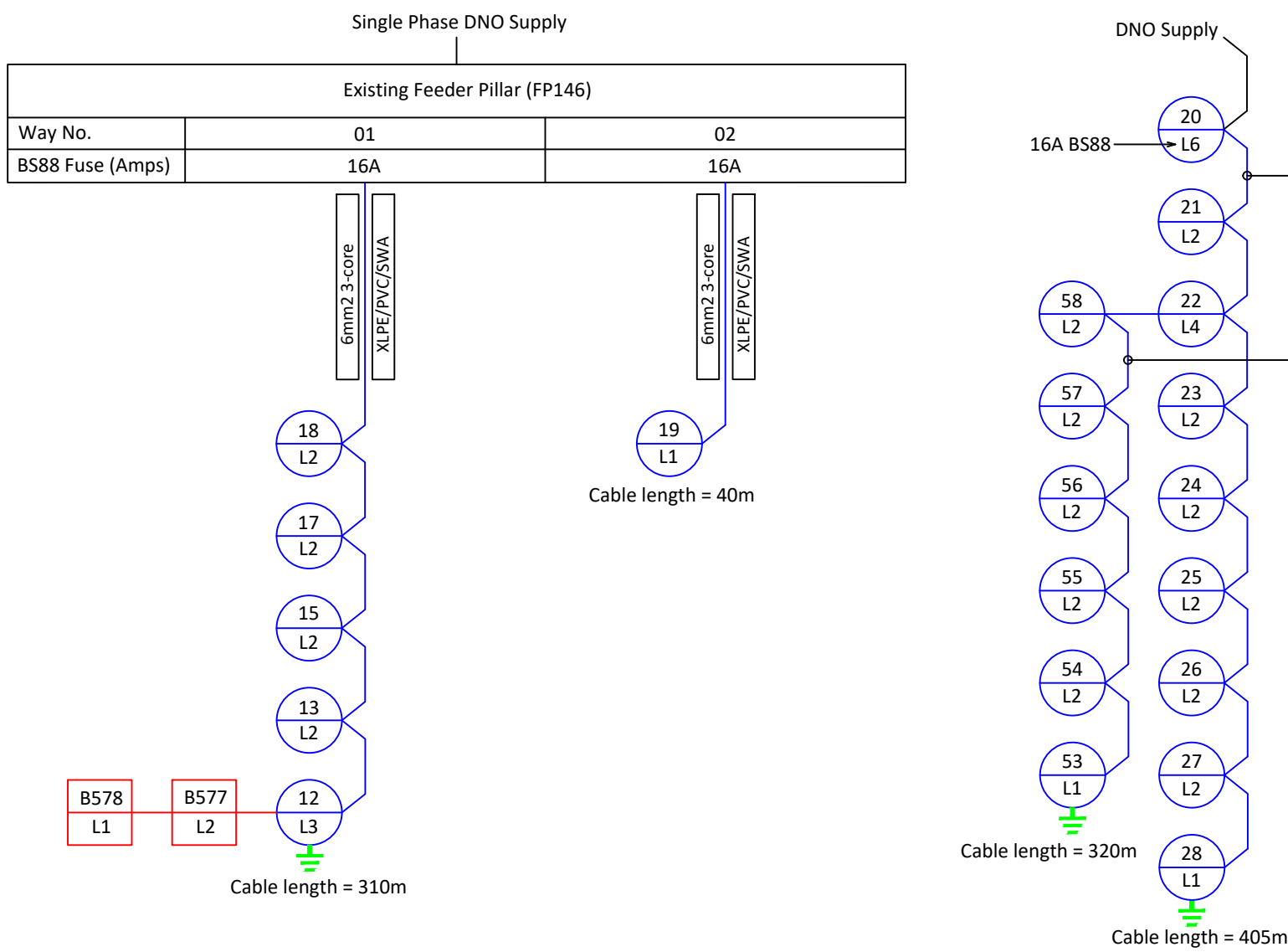
- Proposed lighting column
- Existing lighting column
- Existing illuminated sign pole
- Existing illuminated bollard
- Proposed supply cable
- Existing supply cable
- Earth pit
- Denotes item number
- Denotes cutout type

TERMINATION TYPES

- L1. Single PCN
- L2. Looped PCN
- L3. Single PCN + fused spur
- L4. Looped PCN + fused spur
- L5. DNO
- L6. DNO + fused spur
- L8. DNO + 2no fused spurs

Termination fuse ratings shall be as follows:

- Lighting columns - 6A BS88
- Illuminated sign pole - 4A BS88
- Outgoing sub-fuse - 10A BS88



NOTES

- This design has been prepared in accordance with the HEMSA guidance note - CDM2015 Regulations.
- All works to be completed fully compliant with the following eon standard detail drawings:
 - 13.03 - Installation of street lighting columns.
 - 13.10 - Column door alignment.
 - 14.01 Rev a to 14.06 Rev a - Termination types L1 to L6
 - 14.08 Rev A - Termination Type L8
 - 14.26 - Base compartment general arrangement Rev A
 - 14.27 - Column and sign numbering detail
 - 14.28 - Termination labels in base compartment
 - 14.42 - Feeder pillar type b (up to 6 outgoing circuits)
 - 14.44 - Feeder pillar type d (up to 2 outgoing circuits)
 - 14.50 - Earth pit and electrodes
 - 14.51 - Under ground ducts
 - 14.52 - Cable access chambers
 - 14.53 - Splitter islands (signs plus bollards)
 - 14.54 - Splitter islands (bollards only)

Revisions

Rev	Details	By	Date

DRAWING ISSUED FOR COMMENT

e-on
Lighting & Grid
lightingdesign@eon-uk.com

Client BLACKPOOL BOROUGH COUNCIL

Project BLACKPOOL STREET LIGHTING PFI
AIP YEAR 6 (PART 2)

Title CABLE SCHEMATIC
1 of 1

Dwg No. BLK-AIP-YR6-P2-05 Rev P1

Scales NTS Date 21.06.23

Desigr MK Drawn MK Checked SJA Appd SJA